

Total Solution for Industrial, Rugged & Mil-Spec Computers and Peripherals

RSPS-12

Rugged Multi-Protocol Switch

FEATURES

- 12-port multiprotocol FRAD and packet switch
- Protocols supported: Frame Relay, X.25, ISDN, SDLC, HDLC, MLPPP, RIP, RIP-2, SLIP, PPP, async, Ethernet
- IP support
 - IP routing
 - Standard IP encapsulation over Frame Relay (RFC 1490), X.25 (RFC 1356) or Ethernet
- Unique support of legacy services (i.e., X.25, FR) over IP networks
- Transparent bridging
- Dynamic bandwidth allocation
- Data prioritization
- Automatic backup facility
- Telnet (client and server) support
- X.25/Frame Relay multicasting
- SNMP management via the RADview application on a PC or an HP OpenView UNIX station
- The aggregate data rate on three links can be up to 2 Mbps
- Wide range of interfaces including CSU/DSU and Ethernet



DESCRIPTION

SPS-12 are high performance Frame Relay/X.25 multiprotocol switches. Each port can be configured to one of several protocols: Frame Relay, X.25, ISDN, RIP, RIP-2, PPP, MLPPP, SDLC, HDLC, SLIP, async or Ethernet.

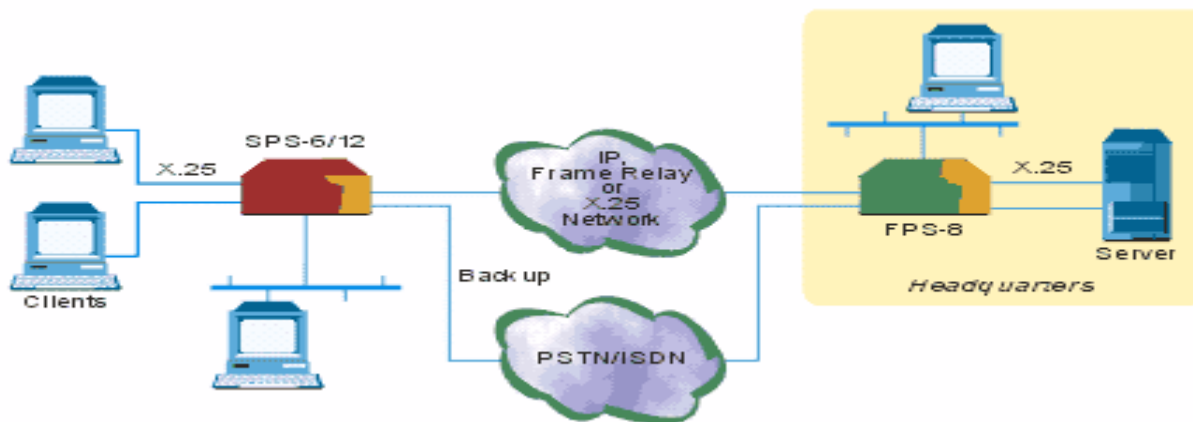
The SPS-3S, SPS-6 and SPS-12 can perform packet switching between different applications such as X.25 to X.25; X.25 to Frame Relay; Frame Relay to Frame Relay; and SLIP to SLIP. They can also encapsulate various protocols over Frame Relay and X.25.

In addition, the SPS products can offer a unique solution for transmitting legacy data over high speed IP networks by encapsulating the data into IP packets.

The built-in management agent enables configuration, compilation of statistics and status reports, and diagnostics. The management agent can be accessed from any location in the network. It can be programmed to transmit this information as the result of an alarm event.

The SNMP agent enables management by the [RADview](#) graphical user interface on a PC or HP OpenView UNIX station, permitting the products to be configured and controlled via the X.25/Frame Relay network. It can send traps to the management station and supports standard MIBs.

Link interfaces are modular and can be ordered for RS-232/V.24, V.35, RS-530, X.21, V.36, as well as ISDN S and U interfaces. Each interface is switch-selectable for DCE or DTE. Both the protocol and the interface can be independently selected on any port.



SPS-12 used to consolidate X.25 and IP for medium-sized branch office



ENVIRONMENTAL CHARACTERISTICS

Temperature

Operating	-18 - +55° C
Intermittent	-20 - +65° C
Non Operating	-30 - +71° C

Temperature MIL-E-5400T

Altitude

Operating	15,000 ft.
Non Operating	35,000 ft.

Vibrations

MIL-STD-810E, Method 514.4, Cat 1 (Basic Transportation) Fig. 514.4-1, 514.4-3

Shock

MIL-STD-810E, Method 516.4, Proc. I, -15g 11ms. Saw Tooth

Explosive

MIL-5400T

EMI/RFI

MIL-STD-461, Class 3

Drip Proof

MIL-STD-810E, Method 506.3

Humidity

MIL-STD-810E, 95% RH (Non Condensing)

PHYSICAL CHARACTERISTICS

DIMENSIONS	3.75" H x 17" W x 18" D
WEIGHT	5 Kg.
POWER	20-30 VDC 230V 50/60Hz Optional

These specifications are subject to change without notice